

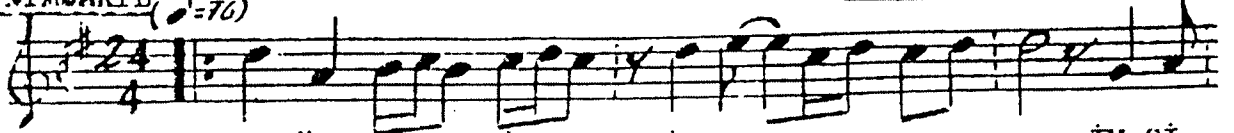
NEYÂ MAKAMINDA KÂR

Gulbun-i ıyş mi-demed sakî-i

BUHURİZÂDE MUSTAFA
İTRİ EFENDİ'nin

USÛLÜ: NİMSAKİL

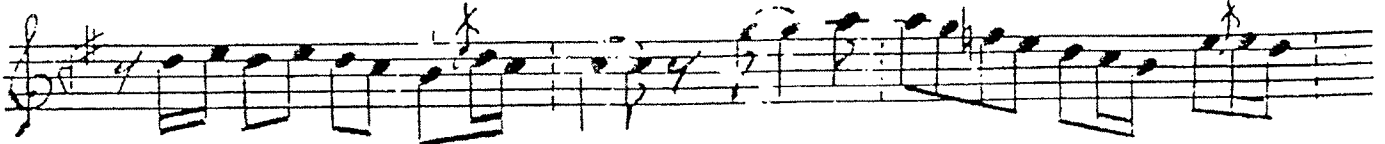
(♩=76)



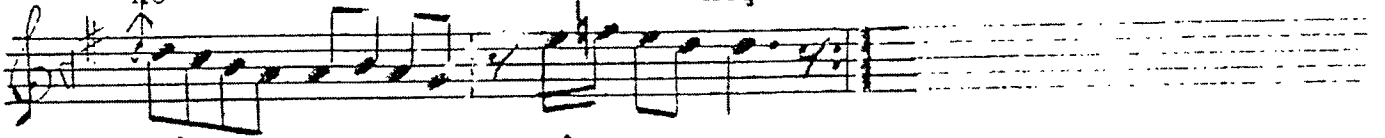
EY GÜL BU - - Nİ - - İ HA - - - İY Şİ
EY BA DI BA HA NA RI



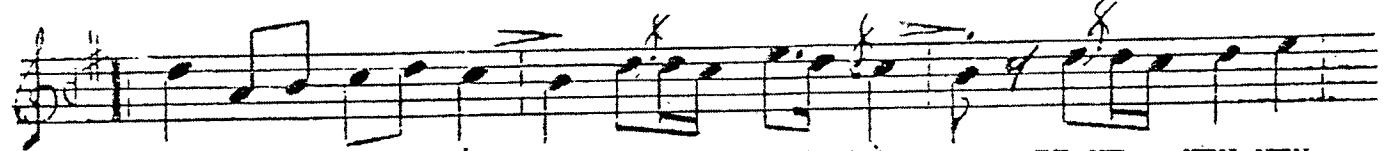
Mİ DE ME - - - D SÂ Kİ - - İ
Mİ VE ZE - - - D BÂ DE - - İ



GÜ - - - L GÜL' İ ZA - - - R
HO - - - HOŞ GÜ VA - - - R



KÜ - - - CÂ - - - NİM



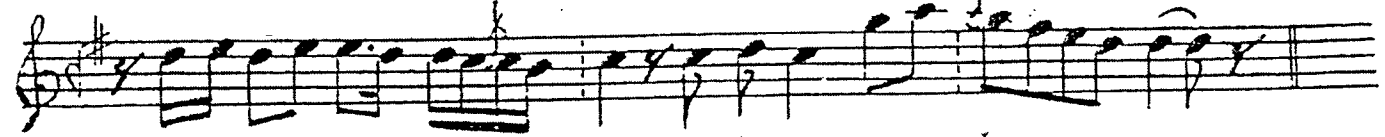
AH TE NE NE N Nİ - - TE NE - NE N Nİ - - TE NE - NEN NEN



NEN NE - N NE N Nİ YEL LELELELE LE L Lİ - - -



YE LE - LE - - LE LE - - LE LEL Lİ TE RE - LE - - LE



LE - - LE LEL Lİ - - - AH YÂ LÂ YEL LE L Lİ - - -



YEL LELELELE LE L LEL LELLİ - - A MAN YELE LEL LE LEL - LE



LE - - - L Lİ - TE RE LEL LL - L L LE L LE - - L Lİ →