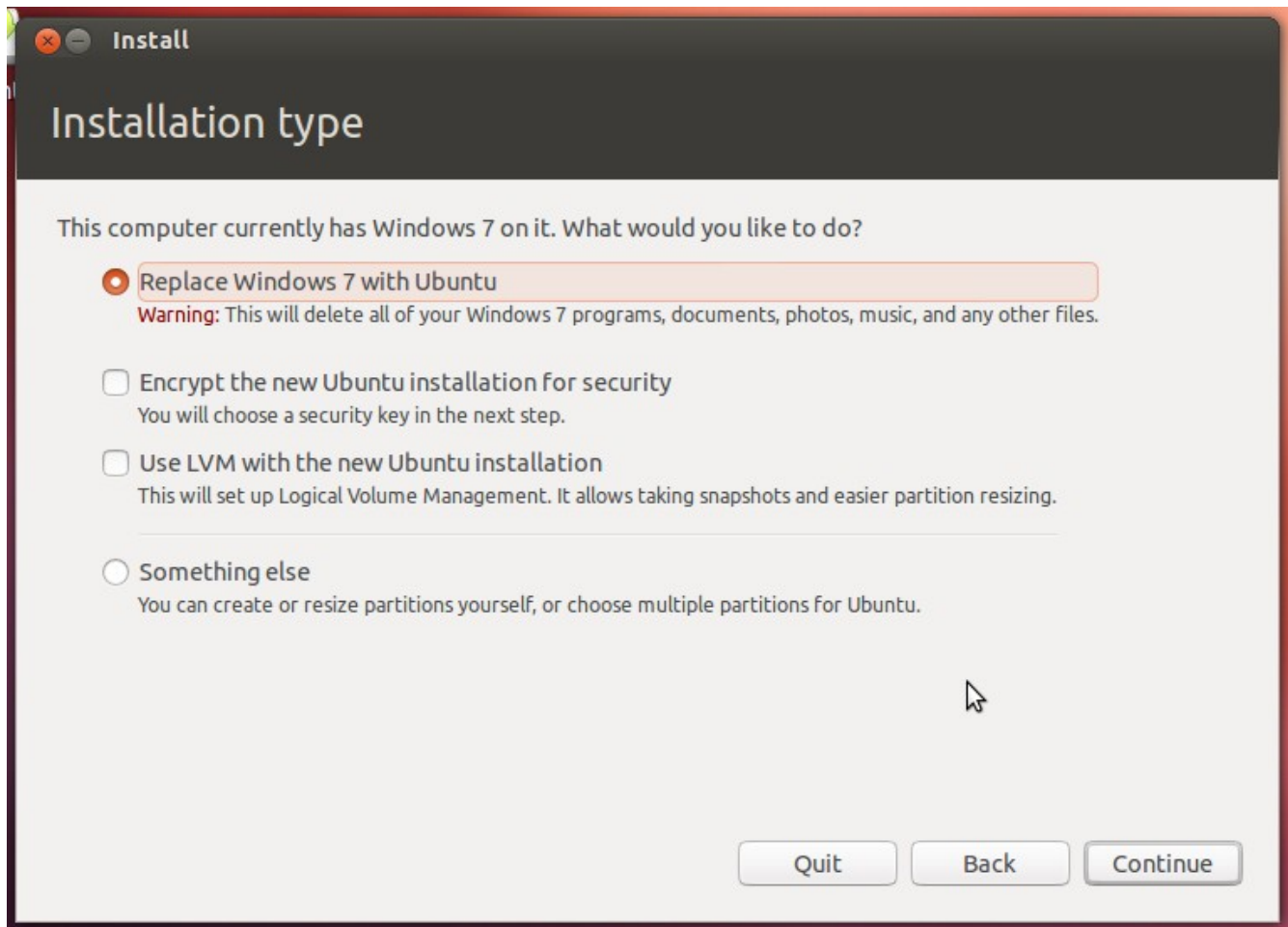


Dual Drive Testing

Scenario 2: Windows on sda/New drive sdb

2.1 Erase everything – LUKS not selected – LVM not selected



'Windows 7' is mentioned on the top notice and replace Windows 7 is clearly mentioned Press 'Continue'

The user can select the target drive

Install

Replace Windows 7 with Ubuntu

Select drive:

The entire disk will be used:



Ubuntu
/dev/sda (ext4)
42.9 GB

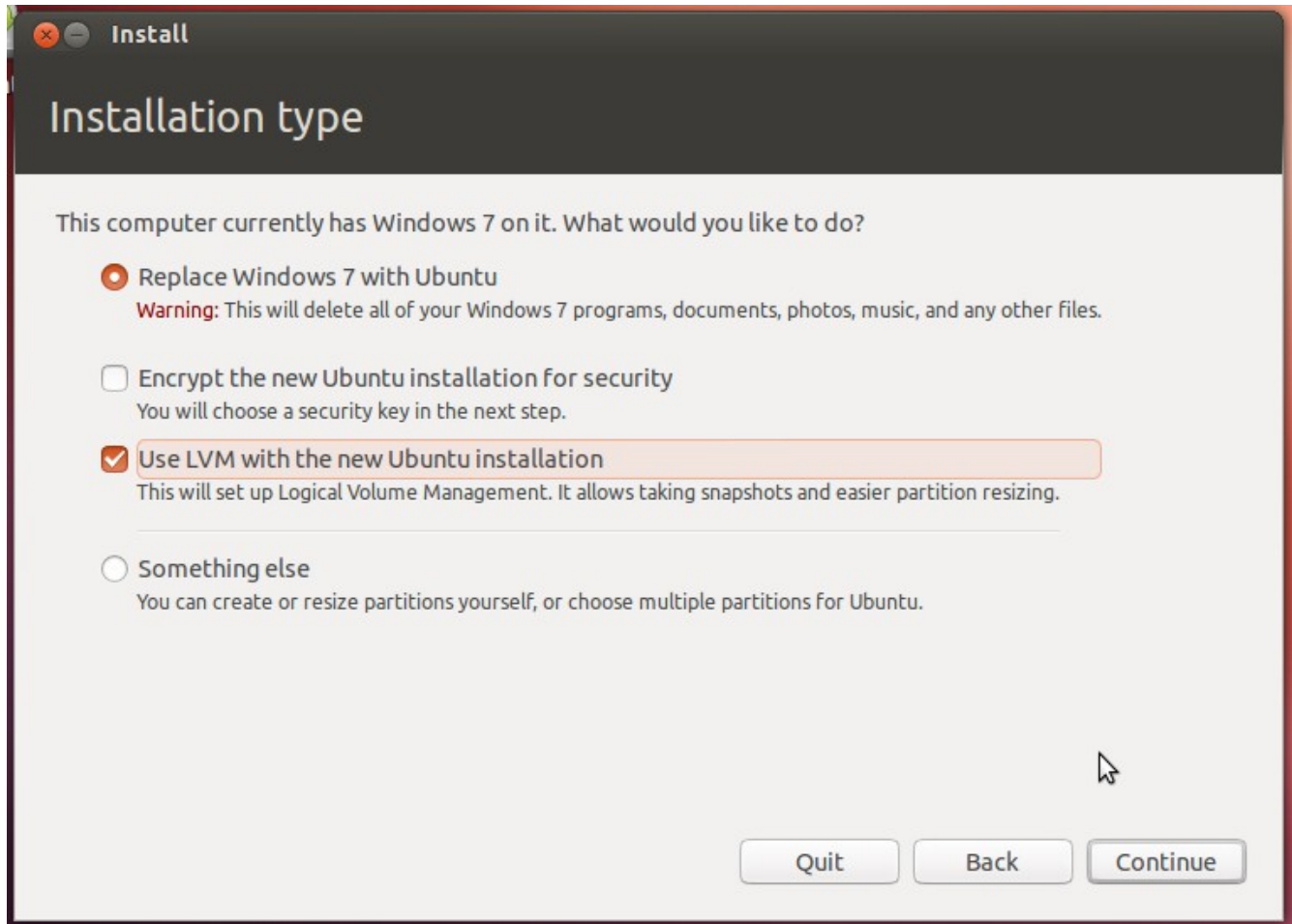
2 partitions will be deleted, use the [advanced partitioning tool](#) for more control

Quit

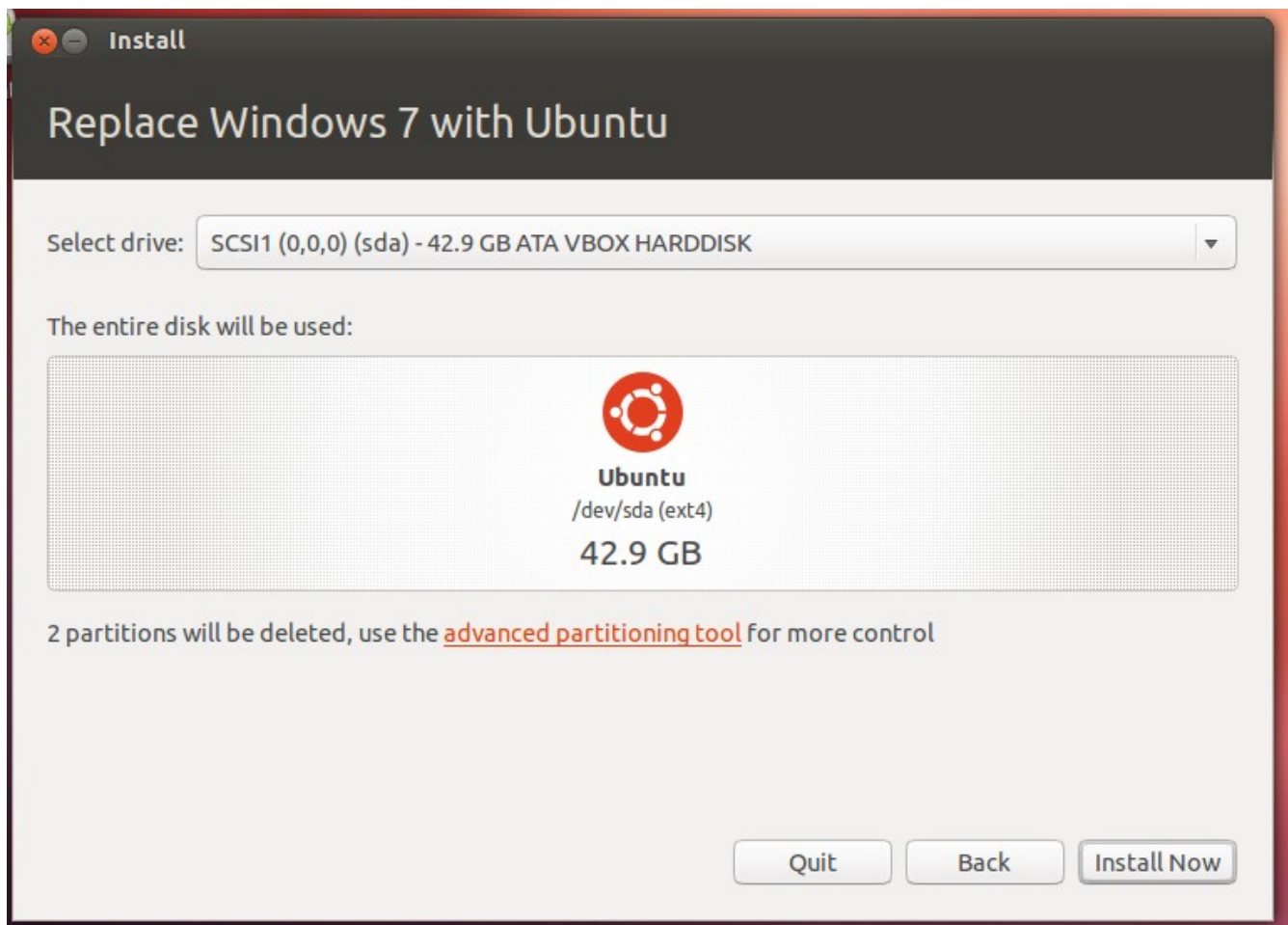
Back

Install Now

2.2 Erase everything – LUKS not selected – LVM selected

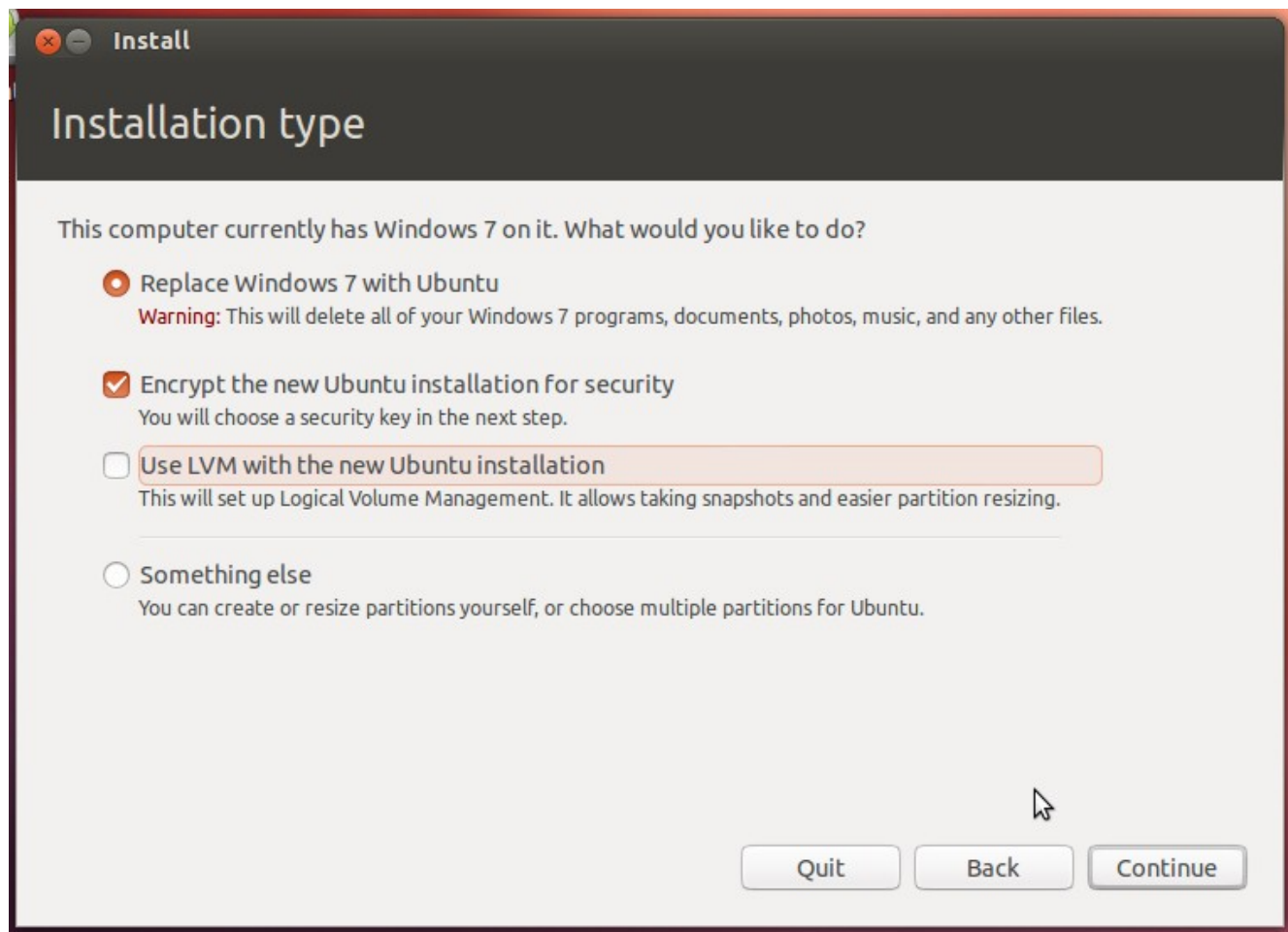


Continue



The user can select the target drive

2.3 Erase everything – LUKS selected – LVM not selected



Continue to security key



Fill the form and press "Install Now "



It proceeds with installation to ??? drive without confirmation (tip: first drive i.e Windows 7)