

## Create MO with external production location (through routing):

Menu Manufacturing Orders Bill of Materials

Reference: MO/00008 Scheduled date: 14/04/2012 07:10:25 AM Source Document:

Product: [3205] BK4005 FR. DISC IEB035-1913 Product Qty: 50,00 Product UOM: Pc

Product UoS Qty: 0,00 Product UoS:

Consumed Products Finished Products Work Orders Scheduled Products Extra Information

Bill of Material: BK4005 FR. DISC IEB035-1913 Routing: Brimar

Raw Materials Location: Stock Finished Products Location: Stock

Products to Consume (1/1 of 1) Consumed Products

Product	Qty	UOM	Source Loc.	Production Lot	Product	Qty	UOM	Product
[0353003] F/Sheet 4005 460x460x2mm	2,000	Pc	Brimar					

## Open picking list, select existing production lot, process stock move 'stock' → 'external location' (1 Pc):

Menu Manufacturing Orders Bill of Materials

Reference: MO/00008 Scheduled date: 14/04/2012 07:10:25 AM Source Document:

Product: [3205] BK4005 FR. DISC IEB035-1913 Product Qty: 50,00 Product UOM: Pc

Product UoS Qty: 0,00 Product UoS:

Consumed Products Finished Products Work Orders Scheduled Products Extra Information

Company: BREMSKERL (UK) LTD

Free Serialisation:

Start Date: 14/04/2012 07:10:

Picking list: OUT/00324

Notes

**OpenERP - Picking list**

Reference: OUT/00324 Origin: MO/00008 Order Date: 14/04/2012 07:11:14 AM

Invoice Type: Expected Date: 14/04/2012 07:11:14 AM

Address: Tony Brent, United Kingdom Ilfracombe Brimar Buildings Stock Journal:

Back Order of:

Products Additional info Notes

Stock Moves (1/1 of 1)

Product	Quantities	UoM	Weight	Net weight	Product UOS	Production Lot	Pack	Source Location	Destination
[0353003] F/Sheet 4005 460x460x2mm	1,000	Pc	0.00	0.00		182655FA		Stock	Brimar

State: Available

Cancel Process

Open move line in 'Products to consume'. Use magnifying glass for production lot:

The screenshot shows the 'Products to Consume' window in OpenERP. The main form contains the following fields and sections:

- Product:** 005 460x460x2mm
- Quantity:** 2,000
- Unit Of Measure:** Pc
- Source Location:** Brimar
- Destination Location:** Production
- Reason:** PROD:MO/00008
- Quantity (UOS):** 0,000
- Product UOS:** (empty)
- Company:** BREMSKERL (UK) LTD
- Production Lot:** 182655FA (highlighted with a red box and a magnifying glass icon)
- Creation Date:** 14/04/2012 07:11:14 AM
- Date:** 14/04/2012 07:10:25 AM
- Scheduled Date:** 14/04/2012 07:11:14 AM
- Actual Movement Date:** (empty)
- Cost Price (at creation):** 0,00
- State:** Available

You get the (correct) available qty for this lot in external location (1 Pc):

The screenshot shows the 'Products to Consume' window with a search dialog open. The search dialog is titled 'OpenERP Search: stock.production.lot (1 result(s))' and contains the following table:

Prefix	Production Lot	Internal Reference	Product	Available	Creation Date
	182655FA		[0353003] F/Sheet 4005 460x460x2mm	1.000	12/03/2012

The 'Available' column value '1.000' is highlighted with a red box. The search dialog also includes fields for Prefix, Production Lot, Internal Reference, Product, and Creation Date, along with a search icon and a magnifying glass icon.

Apply 'Split' in move line:

OpenERP - Products to Consume

Reference: MO/00008  
Product: 005 460x460x2mm  
Quantity: 2,000  
Unit Of Measure: Pc  
Source Location: Brimar  
Destination Location: Production  
Destination Address:   
Scrap

Consumed Products | Finished Products | Work  
Bill of Material: BK4005 FR. DISC I  
Raw Materials Location: Stock

**Products to Consume**  
Product  
[0353003] F/Sheet 4005 460x460x2mm

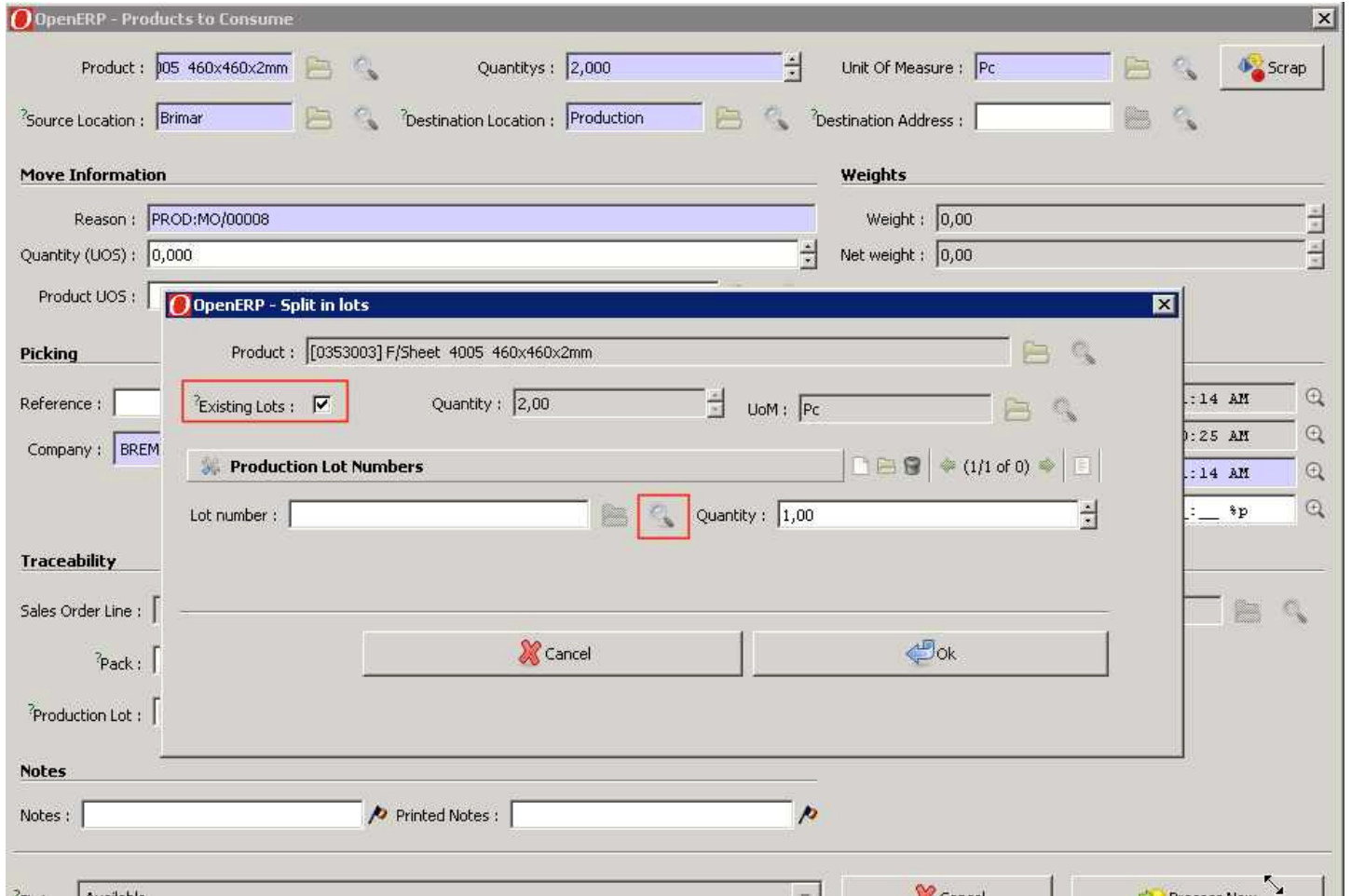
**Move Information**  
Reason: PROD:MO/00008  
Quantity (UOS): 0,000  
Product UOS:   
**Weights**  
Weight: 0,00  
Net weight: 0,00

**Picking**  
Reference:   
Company: BREMSKERL (UK) LTD  
**Dates**  
Creation Date: 14/04/2012 07:11:14 AM  
Date: 14/04/2012 07:10:25 AM  
Scheduled Date: 14/04/2012 07:11:14 AM  
Actual Movement Date: / / \*I: \_ \*p

**Traceability**  
Sales Order Line:   
Purchase Order Line:   
Pack:   
Production Lot: 182655FA  
**Cost Price (at creation)**  
0,00  
New pack  
Split

**Notes**  
Notes:   
Printed Notes:   
State: Available  
Cancel  
Process Now  
State: Ready to Produce

Enable 'existing lots' and use the magnifying glass in this window:



OpenERP lists available qty in 'Stock' instead of 'external location':

