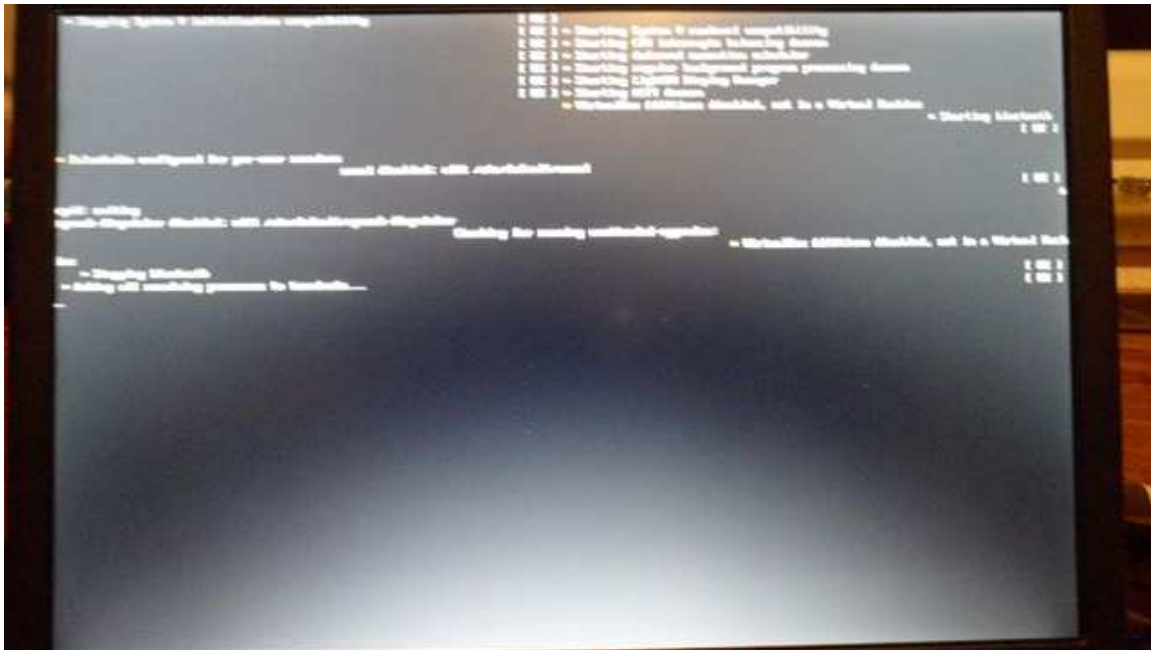


System Crash 1:

System Shut Down NOT POSSIBLE:

MD5 checksum verified = correct

Version: Download: <http://www.linuxmint.com/edition.php?id=94>

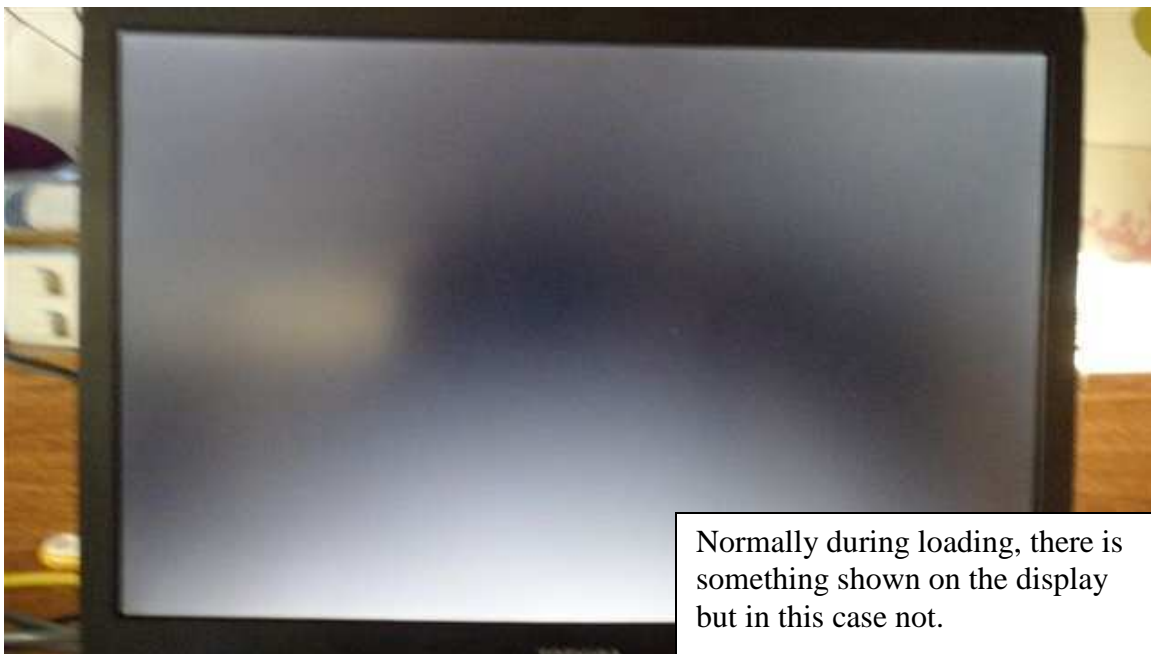
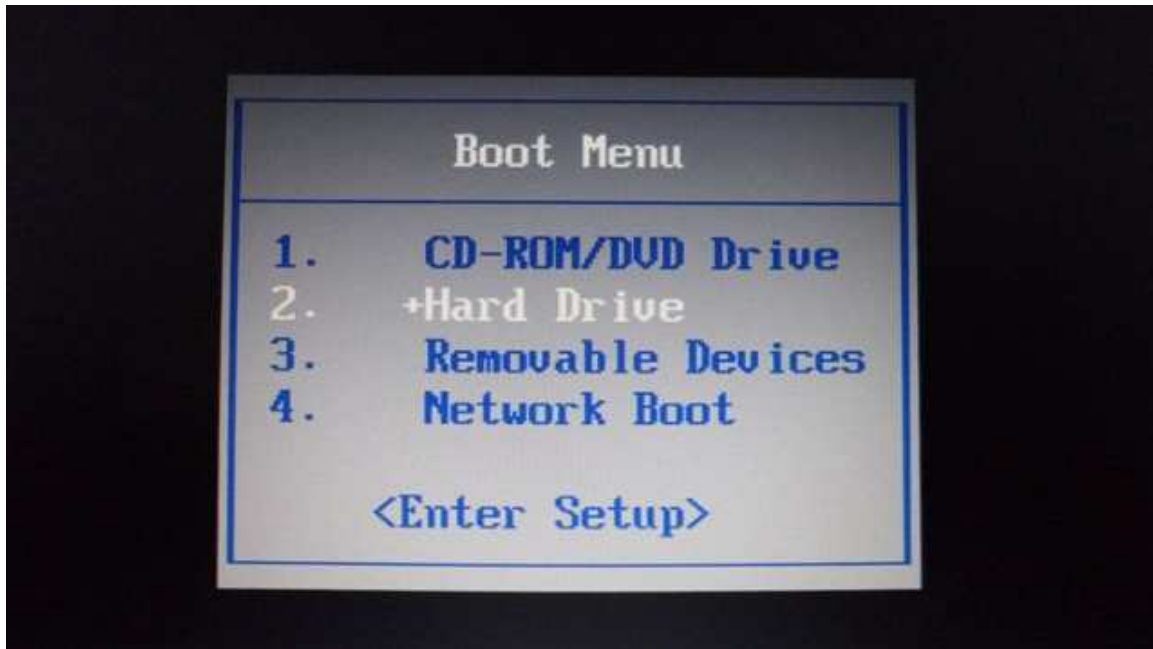


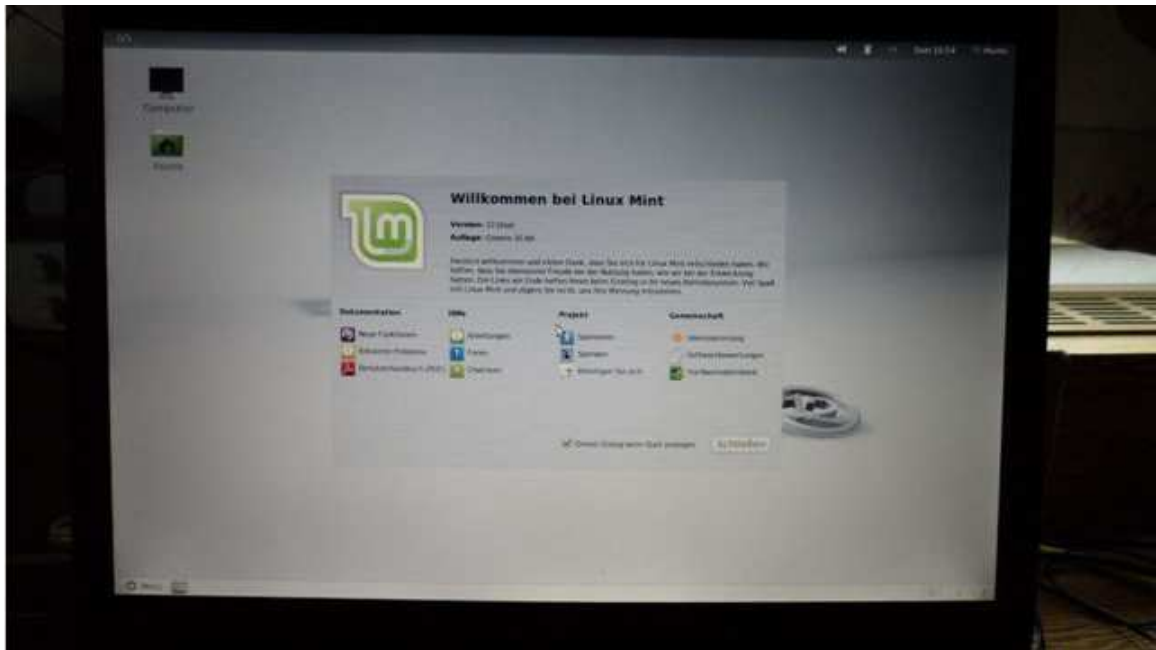
System Crash 2:

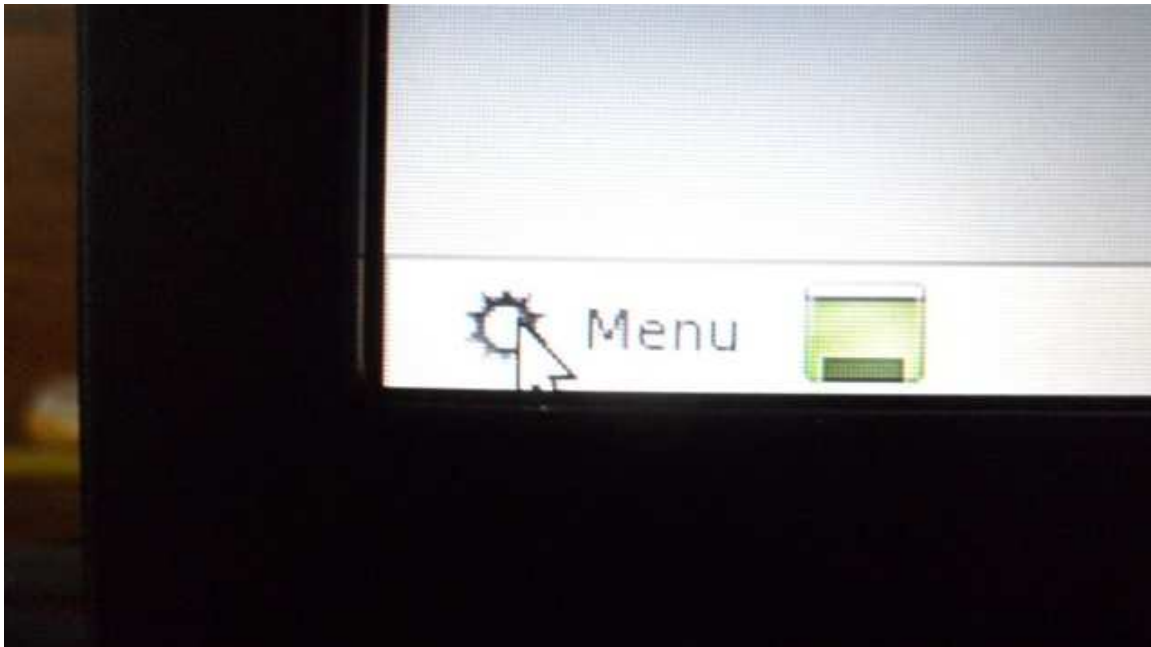
Start Up NOT POSSIBLE:

MD5 Checksum verified = correct

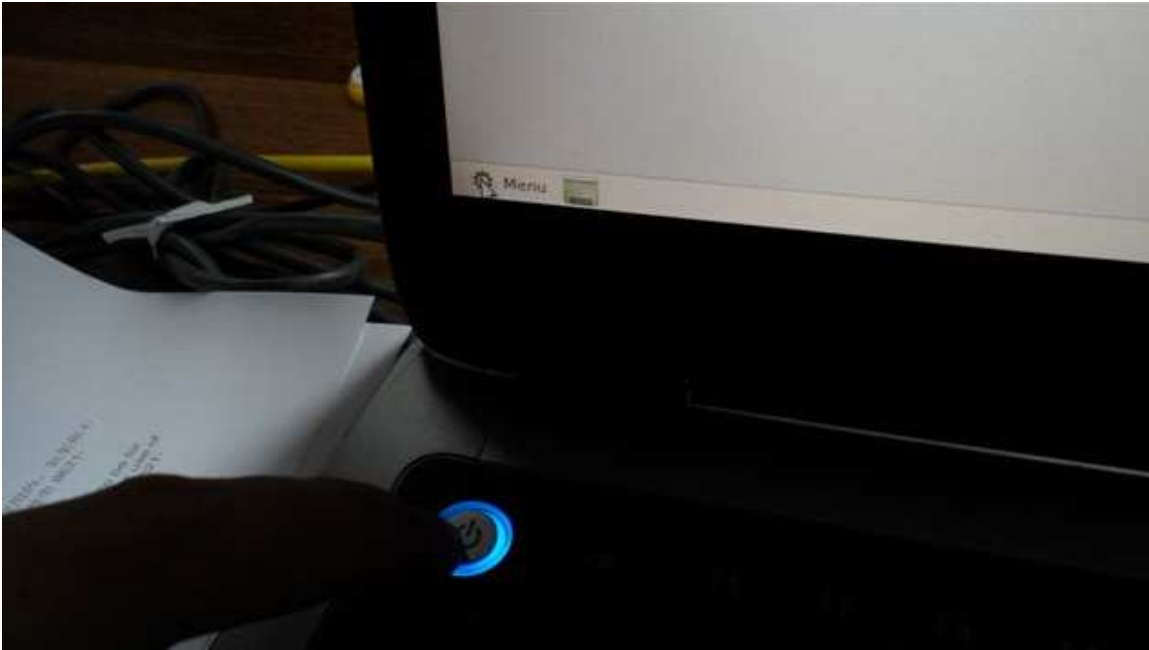
Version: Download: <http://www.linuxmint.com/edition.php?id=94>







Nothing works but the power off button. System is up to date.



The only way to solve this issue is reinstallation of the system.

Seems that this system is very unstable.

I experience also system crashes during installation from the DVD.

After the Welcome Screen with the boot sequence counter, the desk top with the installation icon appears.

I tried to activate the installation icon, finally the screen turns black and that's it.

System Crash 3:

Start Up NOT POSSIBLE:

MD5 Checksum verified = correct

Version: Download: <http://www.linuxmint.com/edition.php?id=94>

```
* Stopping save kernel messages
* VirtualBox Additions disabled, not in a Virtual Machine
* Starting bluetooth
* PulseAudio configured for per-user sessions
saned disabled: edit /etc/default/saned
* Stopping CPU interrupts balancing daemon

* Checking battery state...

* Stopping System V runlevel compatibility

324.689830] SQUASHFS error: squashfs_read_data failed to read block 0x4087f7
[ 324.690028] SQUASHFS error: Unable to read fragment cache entry [4087f7]
[ 324.690194] SQUASHFS error: Unable to read page, block 4087f7, size b3ac
[ 324.690363] SQUASHFS error: Unable to read fragment cache entry [4087f7]
[ 324.690528] SQUASHFS error: Unable to read page, block 4087f7, size b3ac
[ 324.690698] SQUASHFS error: Unable to read fragment cache entry [4087f7]
[ 324.690864] SQUASHFS error: Unable to read page, block 4087f7, size b3ac
[ 324.691033] SQUASHFS error: Unable to read fragment cache entry [4087f7]
[ 324.691197] SQUASHFS error: Unable to read page, block 4087f7, size b3ac
[ 324.691365] SQUASHFS error: Unable to read fragment cache entry [4087f7]
[ 324.691529] SQUASHFS error: Unable to read page, block 4087f7, size b3ac
[ 324.722213] SQUASHFS error: squashfs_read_data failed to read block 0x39aed20
[ 324.722411] SQUASHFS error: Unable to read fragment cache entry [39aed20]
[ 324.722591] SQUASHFS error: Unable to read page, block 39aed20, size c2e0
[ 324.722769] SQUASHFS error: Unable to read fragment cache entry [39aed20]
[ 324.722948] SQUASHFS error: Unable to read page, block 39aed20, size c2e0
[ 324.723132] SQUASHFS error: Unable to read fragment cache entry [39aed20]
[ 324.723307] SQUASHFS error: Unable to read page, block 39aed20, size c2e0
[ 324.723466] SQUASHFS error: Unable to read fragment cache entry [39aed20]
[ 324.723639] SQUASHFS error: Unable to read page, block 39aed20, size c2e0
```

Nothing works but the power off button. System is up to date.