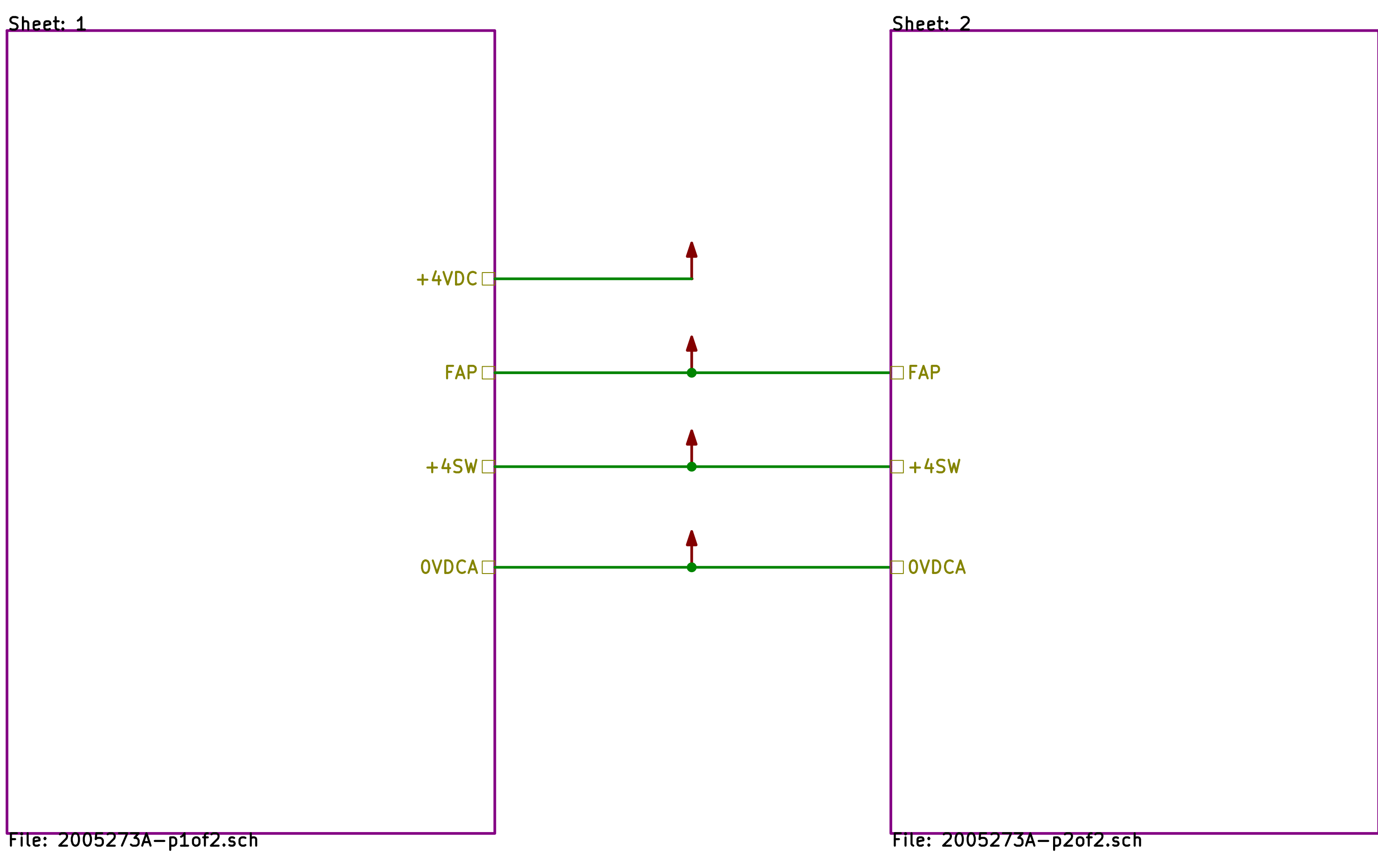


NOTICE: WHEN GOVERNMENT DRAWINGS, SPECIFICATIONS, OR OTHER DATA ARE USED FOR ANY PURPOSE OTHER THAN IN CONNECTION WITH A CONTRACT HEREIN, THEREBY INCURRED RESPONSIBILITY AND OBLIGATION WHATSOEVER, AND TO THE FACT THAT THE GOVERNMENT MAY HAVE CONDUCTED RESEARCH OR IN ANY MANNER SUPPLIED THE DATA, SPECIFICATIONS OR OTHER DATA IS NOT TO BE REGARDED BY IMPLICATION OR OTHERWISE AS AN AUTHORITY AFFECTING THE RIGHTS OF ANY OTHER PERSON OR CORPORATION OR CONSTITUTE ANY RIGHTS OR PERMISSION TO MANUFACTURE, USE, OR SELL ANY PATENTED INVENTION THAT MAY IN ANY WAY BE RELATED THEREIN.

SYM		ZONE		REVISIONS				
				DESCRIPTION	DR	CHK	DATE	APPROVED
A				REVISED PER TDRR 30754				



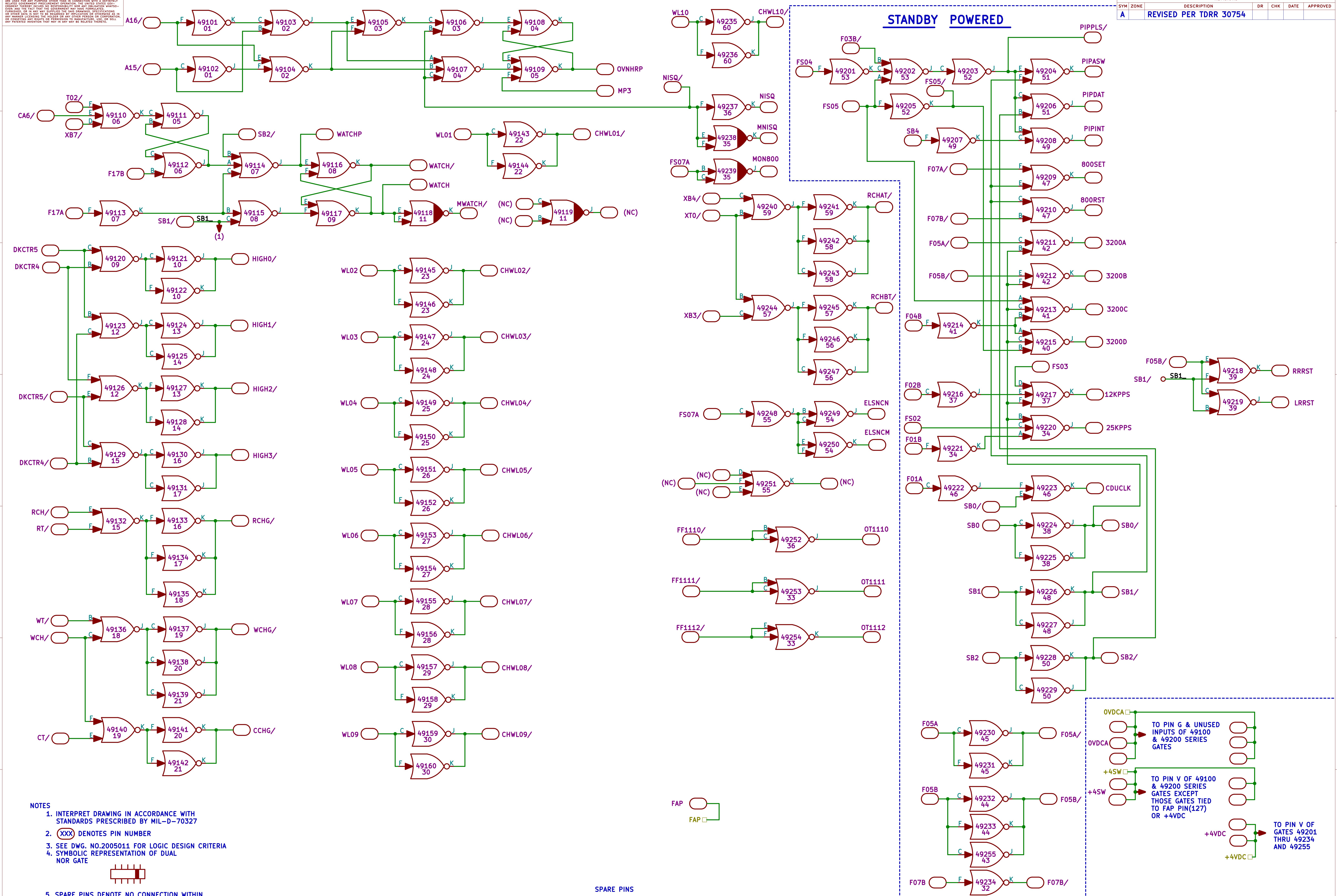
QTY REQD	PART OR IDENTIFYING NO.	MATERIAL OR NOTES	NOMENCLATURE OR DESCRIPTION	FIND NO.
LIST OF MATERIALS				
MIT INSTRUMENTATION LAB CAMBRIDGE, MASS.		MANNED SPACECRAFT CENTER HOUSTON, TEXAS		
DRAWN _____		LOGIC FLOW DIAGRAM MODULE NO. A24 INOUT VII		
CHECKED _____				
APPROVED _____				
DO NOT SCALE THIS DRAWING				
MATERIAL _____				
APPROVED M I T _____		CODE IDENT NO	SIZE	DRAWING NO.
APPROVED MSC _____		80230	E	2005273
NEXT ASSY USED ON APPLICATION		DATE	SCALE NONE	SHEET OF

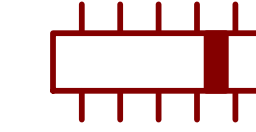
H
G
F
E
D
C
B
A

8 7 6 5 4 3 2 1

NOTICE: WHEN GOVERNMENT DRAWINGS, SPECIFICATIONS, OR OTHER DATA ARE USED FOR ANY PURPOSE OTHER THAN IN CONNECTION WITH A CONTRACT RELATING TO THE OPERATION OF THE UNITED STATES SPACE AND NAUTICAL VEHICLES, THE USER SHALL BE RESPONSIBLE FOR OBTAINING NECESSARY PERMISSIONS FROM THE APPLICABLE AGENCY AND FOR PROTECTING THE RIGHTS OF ANY OTHER PERSON OR ORGANIZATION. THIS DRAWING IS NOT TO BE REPRODUCED OR TRANSMITTED IN ANY FORM OR BY ANY MEANS, ELECTRONIC OR MECHANICAL, INCLUDING PHOTOCOPYING, RECORDING, OR BY ANY INFORMATION STORAGE AND RETRIEVAL SYSTEM, WITHOUT PERMISSION IN WRITING FROM THE SPACE AND NAUTICAL VEHICLES DIVISION, NASA. ANY UNLAWFUL REPRODUCTION OR TRANSMISSION OF THIS DRAWING IS PROHIBITED BY LAW. THE USER SHALL BE RESPONSIBLE FOR OBTAINING NECESSARY PERMISSIONS FROM THE APPLICABLE AGENCY AND FOR PROTECTING THE RIGHTS OF ANY OTHER PERSON OR ORGANIZATION. THIS DRAWING IS NOT TO BE REPRODUCED OR TRANSMITTED IN ANY FORM OR BY ANY MEANS, ELECTRONIC OR MECHANICAL, INCLUDING PHOTOCOPYING, RECORDING, OR BY ANY INFORMATION STORAGE AND RETRIEVAL SYSTEM, WITHOUT PERMISSION IN WRITING FROM THE SPACE AND NAUTICAL VEHICLES DIVISION, NASA. ANY UNLAWFUL REPRODUCTION OR TRANSMISSION OF THIS DRAWING IS PROHIBITED BY LAW.

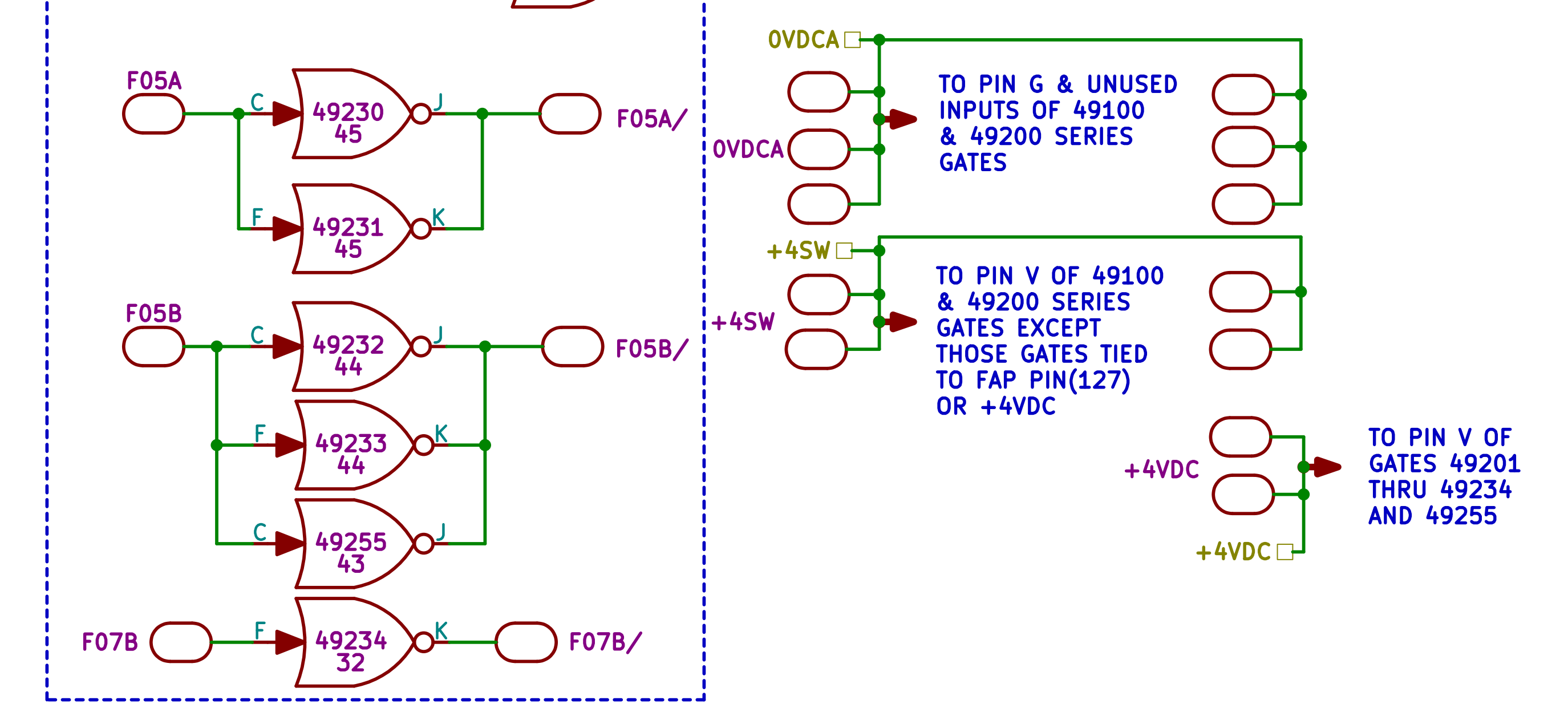
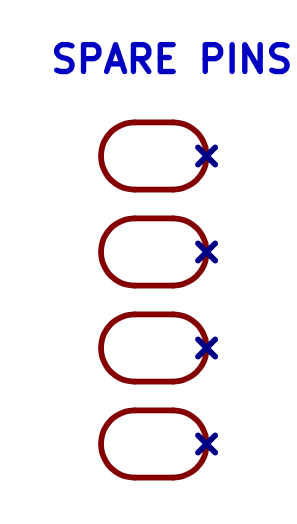
REVISIONS						
SYM	ZONE	DESCRIPTION	DR	CHK	DATE	APPROVED
A		REVISED PER TDRR 30754				



- NOTES**
1. INTERPRET DRAWING IN ACCORDANCE WITH STANDARDS PRESCRIBED BY MIL-D-70327
 2. (XXX) DENOTES PIN NUMBER
 3. SEE DWG. NO.2005011 FOR LOGIC DESIGN CRITERIA
 4. SYMBOLIC REPRESENTATION OF DUAL NOR GATE
- 
5. SPARE PINS DENOTE NO CONNECTION WITHIN THE MODULE. FOR EXTERNAL CONNECTION INFORMATION SEE COMPUTER WIRE LIST
 6. (XXXX XX) UPPER NUMBER DENOTES GATE SHOWN. LOWER NUMBER DENOTES PHYSICAL LOCATION OF GATE ON CIRCUIT BOARD. MULTILAYER SCD NO.1006395
 7. () SYMBOL FOR EXPANDER DUAL NOR GATE SCD NO.1006394
8. () NUMBER IN PARENTHESES DENOTES NUMBER OF REF CIRCLES TO WHICH THIS SIGNAL IS TIED

Notes from the Virtual AGC Project:

1. This CAD drawing was transcribed from the original Apollo Program drawing 2005273A, but does not itself date from the Apollo period. — RSB 2018
2. The original drawing did not show reference designators for the components, so they are also not visible on this transcribed CAD drawing. Though not visible, the NOR-gates have been assigned reference designators U1nn, where nn is the 2-digit number shown on the NOR-gate symbol. The oval pads numbered 101–171 collectively form connector J1, while those numbered 201–271 form connector J2. — RSB 2018



QTY REQD	PART OR IDENTIFYING NO.	MATERIAL OR NOTES	NOMENCLATURE OR DESCRIPTION	FIND NO.

LIST OF MATERIALS	
MIT INSTRUMENTATION LAB CAMBRIDGE, MASS.	MANNED SPACECRAFT CENTER HOUSTON, TEXAS
LOGIC FLOW DIAGRAM	
MODULE NO. A24	
INOUT VII	
CODE IDENT NO	SIZE
80230	E
DRAWING NO.	2005273
DATE	SCALE NONE
SHEET	1 OF 2

UNLESS OTHERWISE SPECIFIED DIMENSIONS ARE IN INCHES CAPACITOR VALUES ARE IN UF RESISTOR VALUES ARE IN OHMS TOLERANCES ON

FRACTIONS DECIMALS ANGLES
± ± ± ± ±

DO NOT SCALE THIS DRAWING

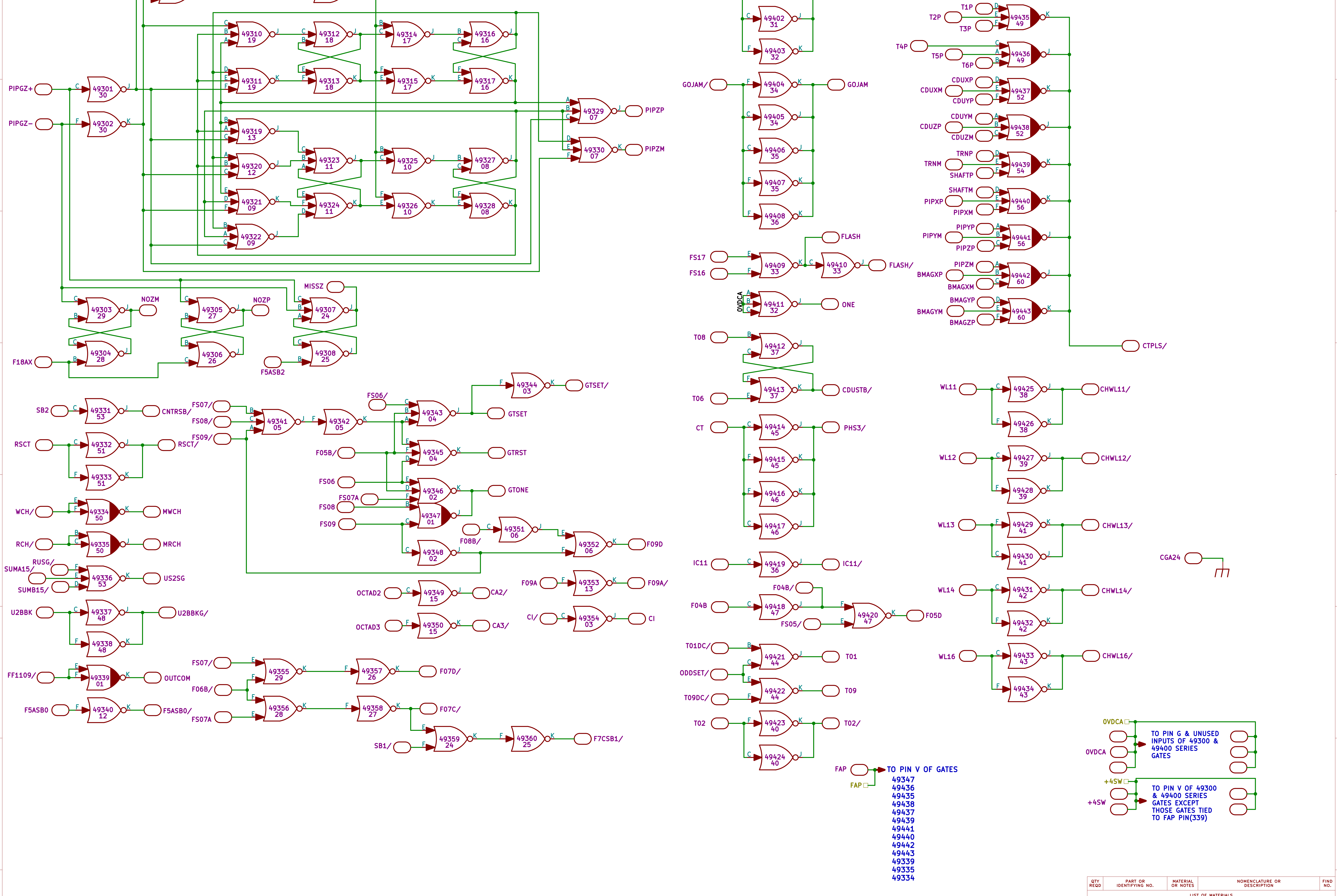
MATERIAL

NEXT ASSY USED ON APPLICATION

APPROVED M I T APPROVED MSC

NOTICE: WHEN GOVERNMENT DRAWINGS, SPECIFICATIONS, OR OTHER DATA ARE USED FOR ANY PURPOSE OTHER THAN IN CONNECTION WITH A CONTRACT RELATING TO THE PURCHASE OF SUPPLIES FROM THE UNITED STATES GOVERNMENT, THE USER ASSUMES ALL RESPONSIBILITY FOR ANY OMISSION, MISSTATEMENT, OR ERROR IN THE DRAWING. THE USER SHALL IN NO EVENT BE HELD RESPONSIBLE FOR ANY OMISSION, MISSTATEMENT, OR ERROR IN THE DRAWING. THE USER SHALL IN NO EVENT BE HELD RESPONSIBLE FOR ANY OMISSION, MISSTATEMENT, OR ERROR IN THE DRAWING. THE USER SHALL IN NO EVENT BE HELD RESPONSIBLE FOR ANY OMISSION, MISSTATEMENT, OR ERROR IN THE DRAWING.

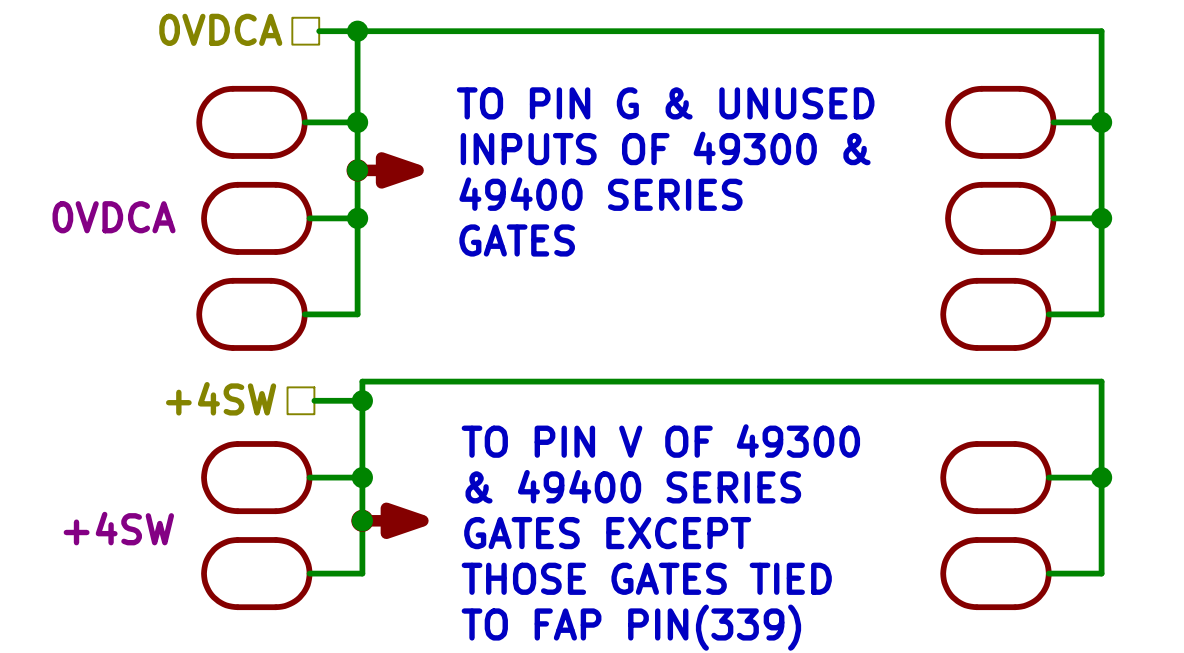
REVISONS						
SYM	ZONE	DESCRIPTION	DR	CHK	DATE	APPROVED
A		REVISED PER TDRR 30754				



Notes from the Virtual AGC Project:
 1. This CAD drawing was transcribed from the original Apollo Program drawing 2005273A, but does not itself date from the Apollo period. — RSB 2018
 2. The original drawing did not show reference designators for the components, therefore this transcription does not show them either. Though not visible, the NOR gates have been assigned reference designators U2nn, where nn is the 2-digit number shown within the NOR-gate symbol. Connector J3 consists of the oval pads numbered 301–371, while connector J4 consists of the oval pads numbered 401–471. — RSB 2018

SPARE PINS

FAP → TO PIN V OF GATES
 49347
 49436
 49435
 49438
 49437
 49439
 49441
 49440
 49442
 49443
 49339
 49335
 49334



QTY REQD	PART OR IDENTIFYING NO.	MATERIAL OR NOTES	NOMENCLATURE OR DESCRIPTION	FIND NO.
			MIT INSTRUMENTATION LAB CAMBRIDGE, MASS.	
			MANNED SPACECRAFT CENTER HOUSTON, TEXAS	
			LOGIC FLOW DIAGRAM MODULE NO. A24 INOUT VII	
			DRAWING NO. 2005273	
			CODE IDENT NO/ SIZE 80230 E	
			DATE SCALE NONE	SHEET 2 OF 2