

only a minor problem compared to the problem of designating part order for things like the Massachusetts General Laws.

This enhancement provides the ability for a staff member to specify a sort order for parts.

Requirements

- Staff members (having sufficient privileges) can designate that a bib item's part labels have an explicit order.
- The order of the parts can be revised at any time by Staff members (having sufficient privileges).
- The privileges required are the same as those required to add a part. It was thought that this sort of maintenance would be done by only by consortium staff, but if a librarian can add new part names, they should be able to modify the order of the parts in case the default "newest/end of the list" is not quite correct. Otherwise, each addition by library staff might require a reordering by consortium staff – a two-step process that would be awkward to track.

Proposed Modifications to the Existing Monograph Parts Screen

- Eliminate "Back Next"** – the paged presentation is confusing to the user, as they can quickly lose their place in the list. It is also implemented poorly, with "back" selectable even if one is at the top screen. More importantly, though, it makes the repositioning of an added or existing item very confusing. Its place will be a simple scrollable window that takes up the lower part of the screen.
- Scroll To Bottom Upon Open** – It is much less confusing to present the list in "chronological order" with the newest on the top. Compare:

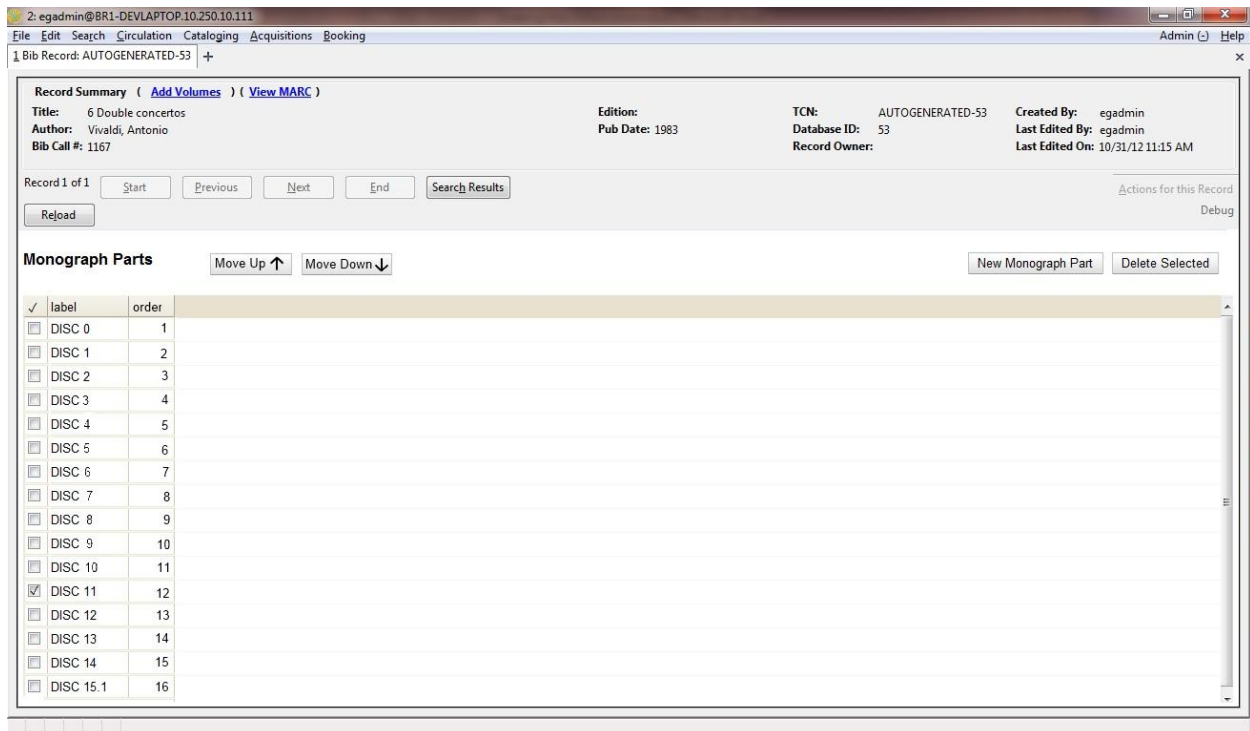
April 2002	Sept 2002
May – June 2002	July – Aug 2002
July – Aug 2002	May – June 2002
Sept 2002	April 2002

It is much clearer to perceive the ordering as shown on the left. Given that, and because the most frequent operation will be to add a part (say for the latest issue of a periodical), the parts list will open scrolled to the bottom.

- Heading Area Not Scrolled** – Currently, the table header and the addition/deletion controls are part of the area scrolled when the list gets too long to fit (when you've added several labels). The heading area will be changed to be in a fixed position, and not part of the scroll area.
- Remove the # Column** – This column currently serves no purpose, as the number starts at 1 with every screen.
- Default Display in label_sortkey Order** – The intent is to use the **label_sortkey** when an explicit sorting order isn't specified, and presenting in this order will make it clear if things are out of sequence.
- Add Control to Switch to Manual Control** – This control will appear in the control strip just above the label list. It will be present when the list is under automatic sorting rules, and not appear, otherwise. When the control is clicked, an additional column ("sort order") will be added to the label list with the topmost/eldest label assigned the value 1 and the numbers incrementing downwards.
- Indicate Sorting Instructions** – When a manually sorted list is displayed, advisory text will appear like "Check row to reposition".

- H. **How To Reposition A Row** – When a single row is checked, two buttons will appear in the control strip: “Move Up ↑” and “Move Down ↓”. If the selected row is at the top or bottom of the list, then the corresponding control that does not apply will either be invisible or grayed-out (or be not active). If a Move button is pressed, the list will be refreshed with the selected item displaced by one row in the direction in movement; the list will be scrolled so that the selected item is close to the center of the portion of the list that is visible. The serial numbers will be adjusted to keep the rows in order.
- I. **No Save Button** – The reordering action will take effect immediately; there is no SAVE button.
- J. **Controls Disappear Upon Loss of Focus** – When other than a single row is checked, the Move buttons will be replaced by the advisory text on how to sort the list.
- K. **Label Deletion Deletes Sort Number** – If labels are deleted, remaining labels will be renumbered so that there are no gaps in the sort order sequence.

Mockup of Sample Screen



Effects of Changing Sort Order

If the explicit sort order is established, the sort order will be used in presentations where previously the label_sortkey was used, such as the drop-down in the volume and copy creator screen.

Part 2: Merge labels

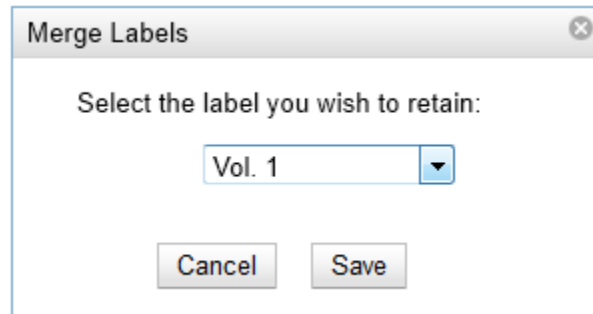
Because the entry of labels has been, essentially, uncontrolled, different formats are used for part labels. All these could conceivably be used for the same part label: v. 2, vol. 2, Vol 2, V. II, etc. This capability will give staff the ability to remedy the situation by collapsing more than one label into one.

Requirements

- A staff member should be able to designate which of a group of labels should prevail.
- Non-prevailing labels are automatically deleted with no further action needed by the staff member.

Proposed Modification to Monograph Parts Screen

- A. When fewer than two labels are checked, advisory text will appear in the command bar: “To merge labels, check all labels to be merged”.
- B. When two or more labels are checked, the advisory text will be replaced with a button labeled “Merge Labels”.
- C. When clicked, a modal screen will appear looking something like this:



- D. The drop-down will contains a list of all the labels that were checked. Clicking on “Save” will cause the following actions:
 - The modal screen disappears
 - The database is updated:
 - i. Items in the asset.copy_part_map have their part fields remapped to the prevailing part that was selected in the drop-down.
 - ii. Monograph_part entries corresponding to non-prevailing part are deleted
 - The list of labels is refreshed (showing that the merged labels are now gone)