

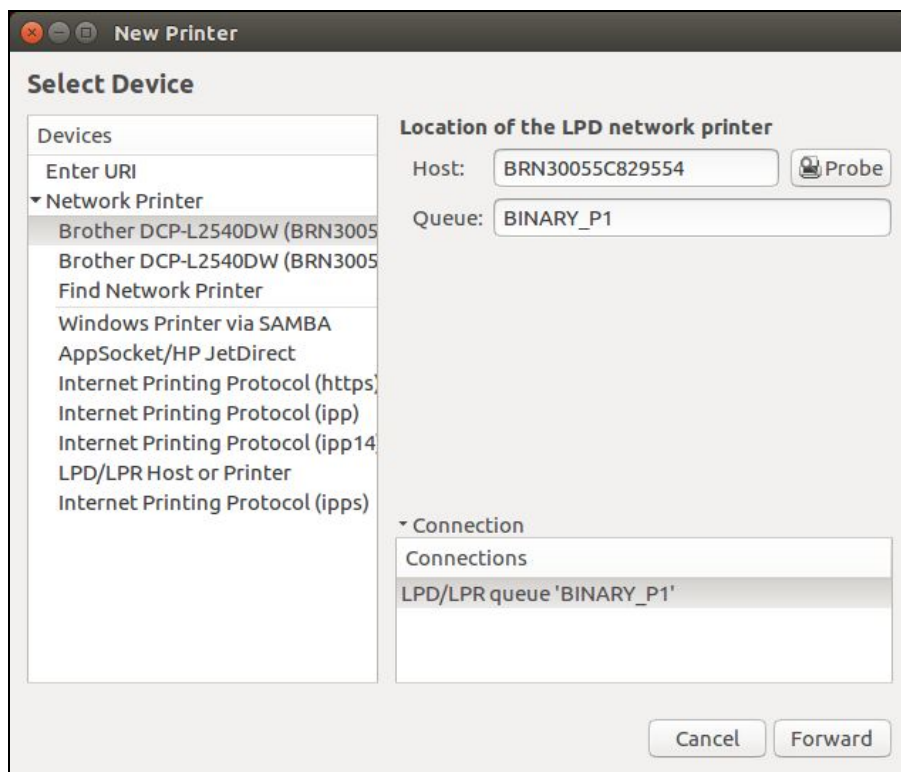
## Installing network printer in Ubuntu 16.04

**Example network printer:** Brother DCP-L2540DW (Static IP: 192.168.1.20)

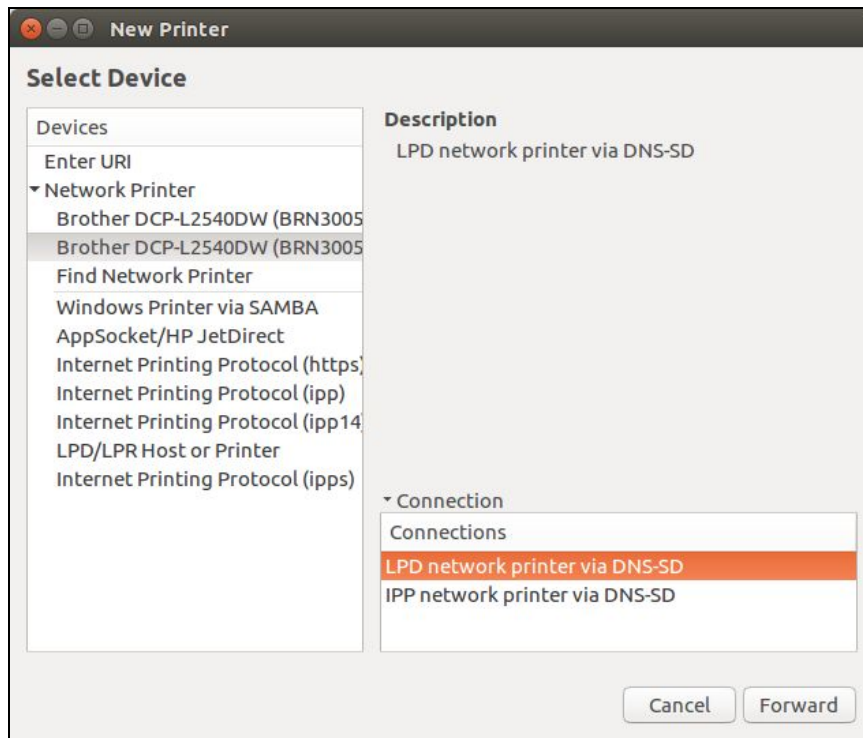
**Adding the printer:** Settings > Printer > Add

Device shows printer twice. Selecting first options show's Host etc. Notice the odd "Host" name, this also becomes the "Device URI" later.

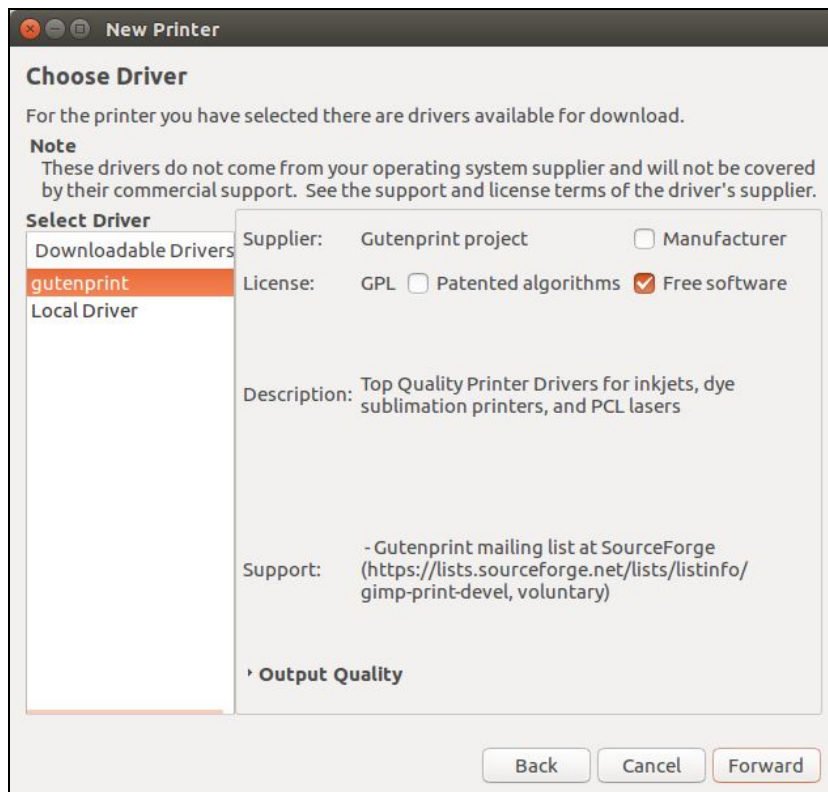
**\*Note:** I can install successfully if I replace the Host name with IP address. Or change it after it's installed from the "BRN30055C829554" number shown.



Second options looks like this:

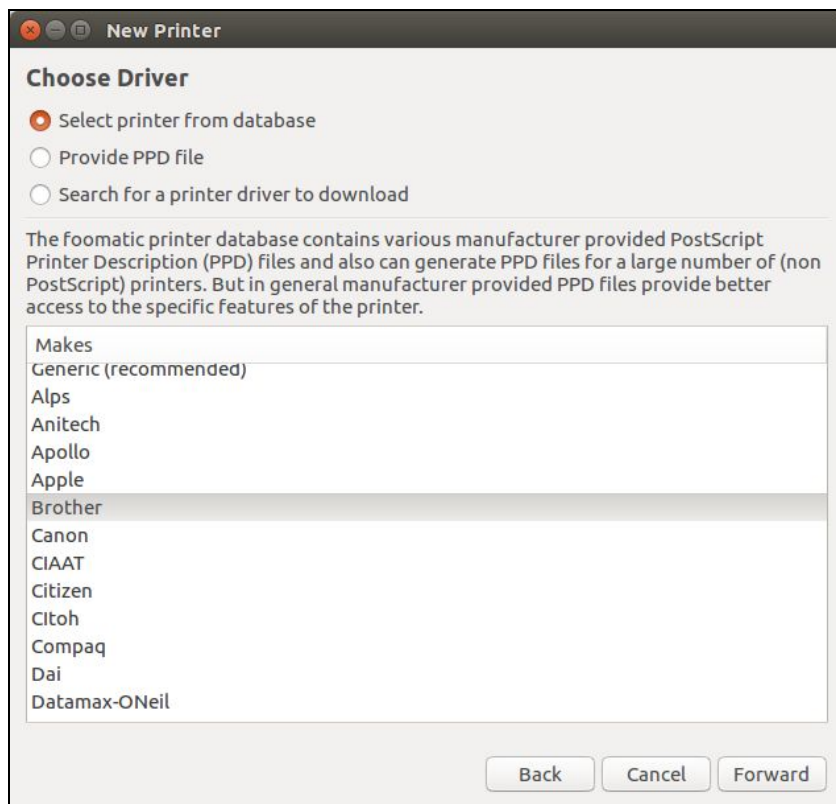


I choose the first printer option as it's the default, and click "Forward". This is my next screen.

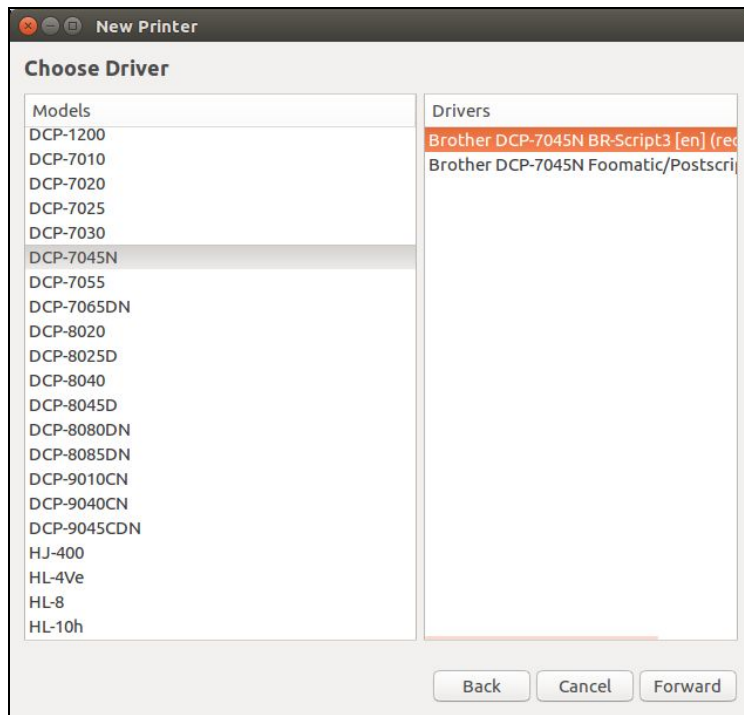


I click "Forward".

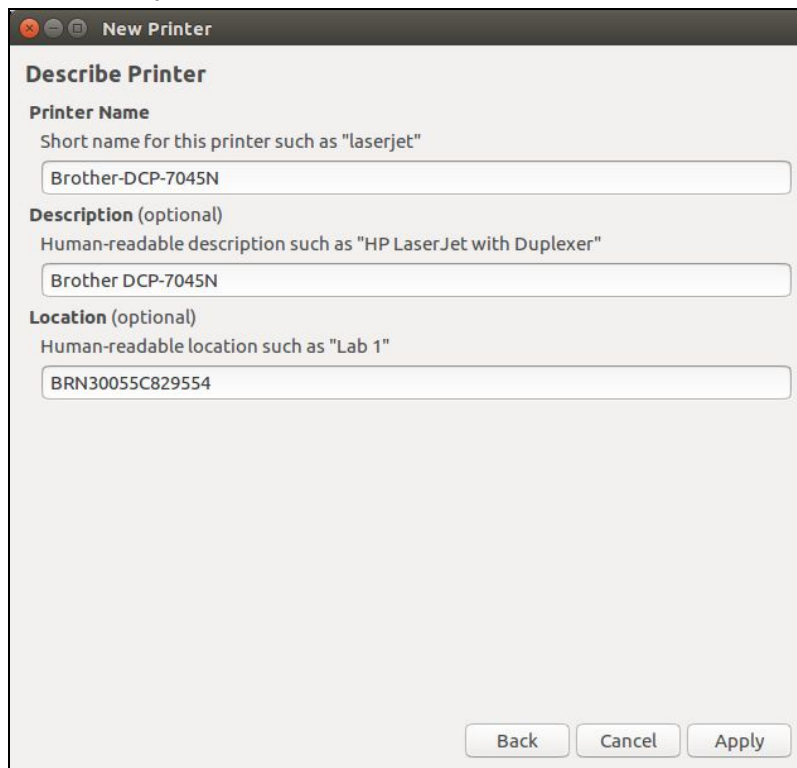
I select "Brother" and click "Forward".



My printer (Brother DCP-L2540DW) is not shown, so I pick any DCP type printer, pray the driver is compatible (which it usually is), and click “Forward”.

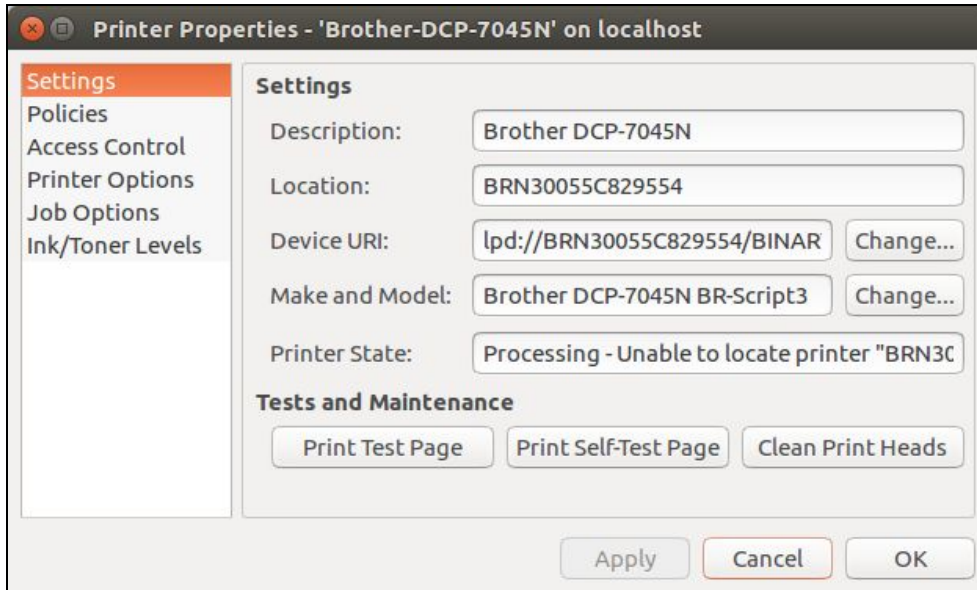


I click “Apply”

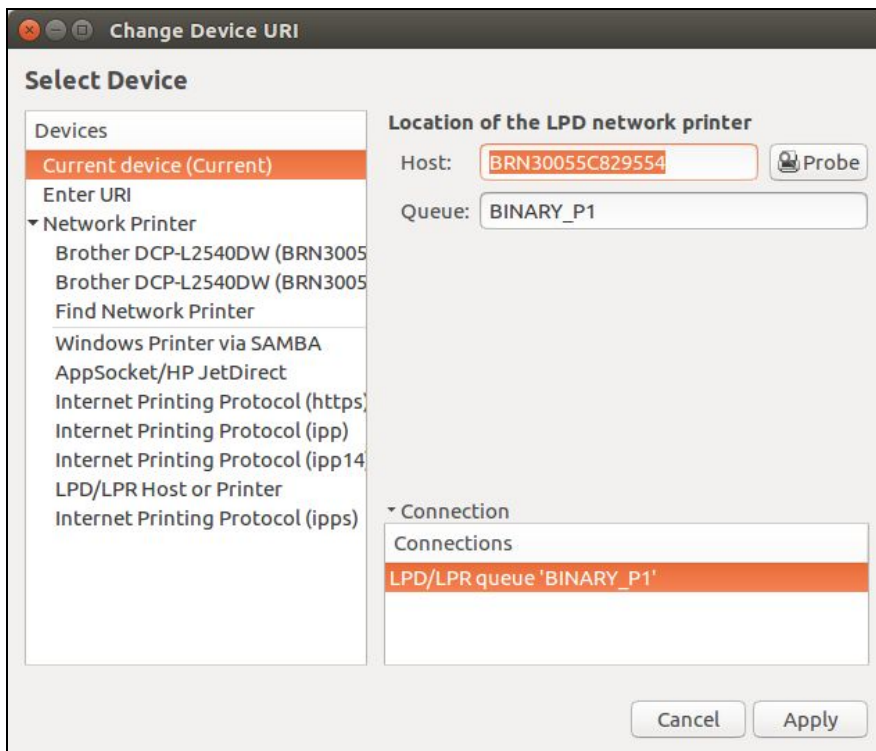


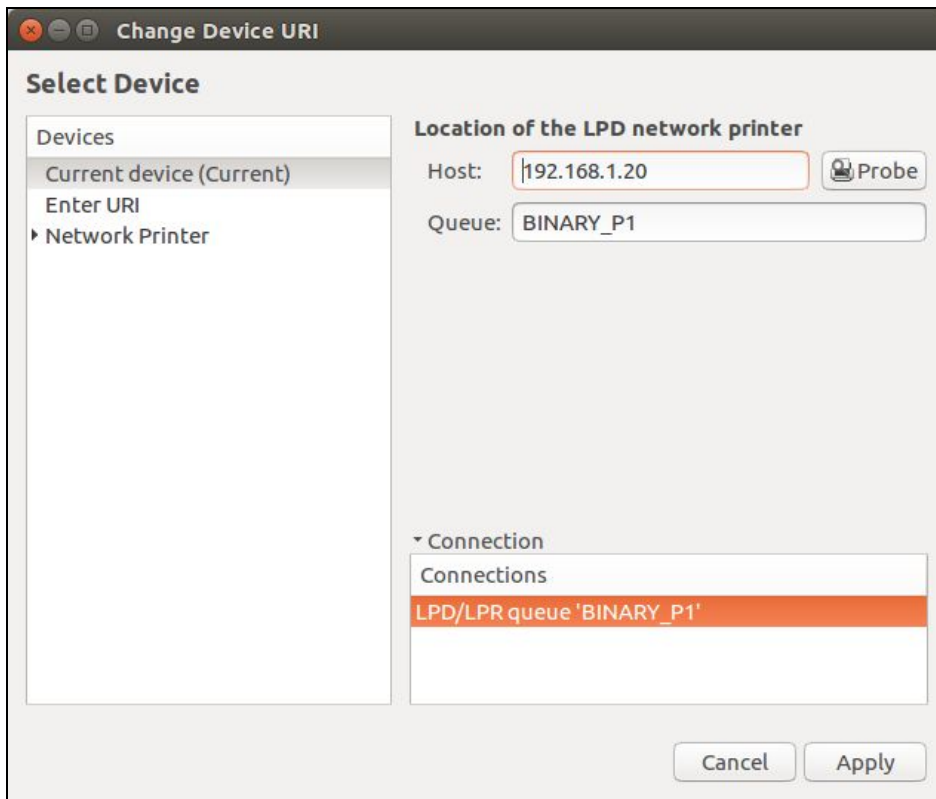
The printer is installed but pages do not print.

Here is what the default printer properties look like.

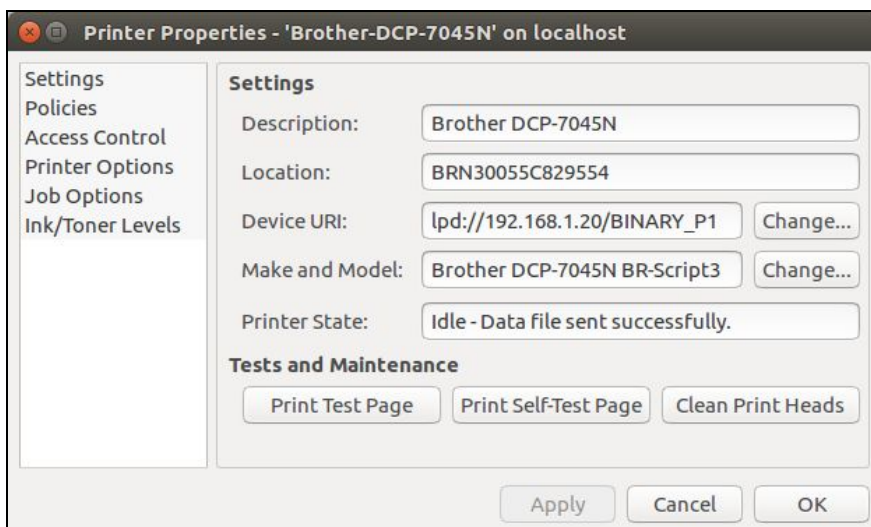


The Device URI appears incorrect. If I click “Change” for the Device URI, and select the HOST field. I change it to the printer IP, and click “Apply”.





Now printer properties changes to this for Device URI (lpd://192.168.0.20/BINARY\_P1) which you could also enter manually.



After updating the Device URI to the IP address I can now print successfully!